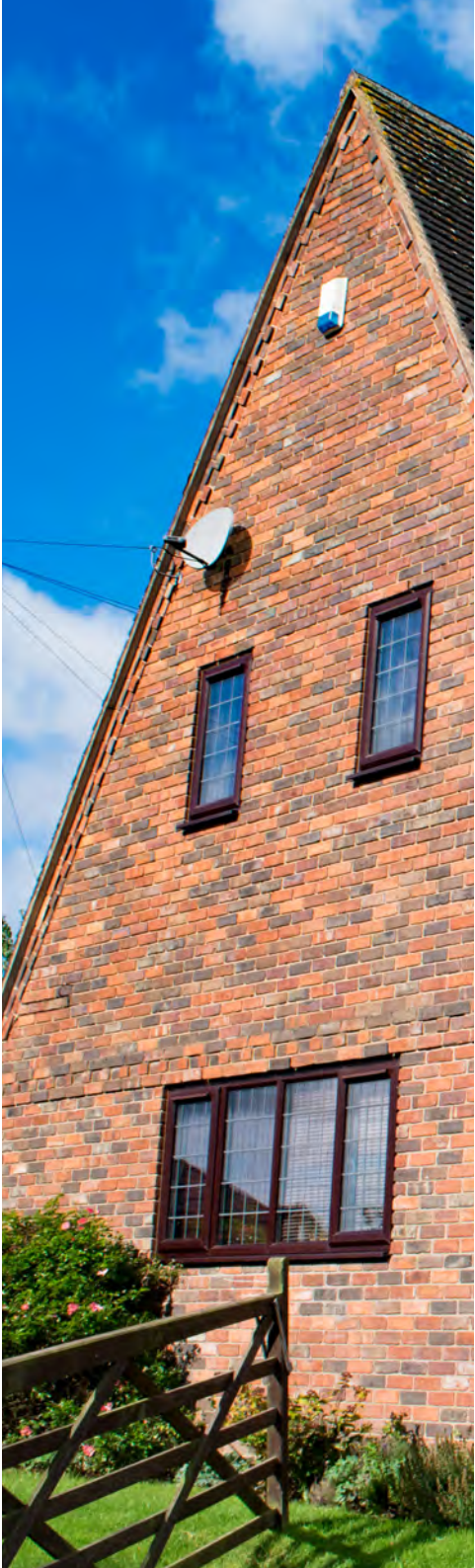




Willow Lodge Statement of Purpose April 2023



Contents

Page No.

1.	Who Uses Our Service?	3
2.	Ethos, Aims and Objectives	3
3.	About Our Home	4
4.	Supporting Cultural, Linguistic, Religious, Creative and Physical Needs	5
5.	Education	6
6.	Children's Health	7
7.	Young People's Therapeutic Care	8
8.	Leadership and Management	10
9.	Admission Criteria	13
10.	Contact Arrangements	15
11.	Complaints Procedure	16
12.	Access to Child Protection Policies	17
13.	Consulting About Quality of Care	18
14.	Children's Rights and Anti Discriminatory Practice	19
15.	Protection of Children	20
16.	Behavioural Support & Management	22

1. Who Uses Our Service

- Willow Lodge is registered with OFSTED as a home for up to four young people of mixed gender, aged between 8 and 18 years.
- Children that are admitted to Willow Lodge will all have been assessed as presenting emotional, behavioural or educational difficulties.

2. Ethos, Aims and Objectives

Our ethos encompasses providing individually tailored Therapeutic Care and Education packages. We do this on a planned year-round basis, providing care that will help young people within our homes to develop both the social and life skills that will enable them to live safely and productively in the community.

In order to achieve this we aim to:

- Provide a safe and psychologically secure environment offering structure and consistency of boundaries to young people, coupled with a homely living environment.
- Listen to young people and encourage them to be involved in all aspects of their care.
- Provide an open and honest learning environment for young people and staff allied to promoting and encouraging respect for each other, and promoting positive relationships with adults.
- Individually tailor care, education and therapy programmes and ensure that the collaborative practices between care, therapy and educational staff provide the young people with consistency and security.
- Focus on a young person's strengths and use these as a basis to create achievable targets that address difficulties.
- Safeguard young people and take a proportionate approach to risk that minimises the risk of harm but also allows them to experience positive growth and development.
- Enable young people to explore past events, the present and their future possibilities in a safe and supportive environment.
- Support young people to develop understanding of the meaning, significance and consequences of their behaviour, thereby opening up the possibility of change.
- Promote good communication and effective working relationships between relevant parties that keeps young people at the centre of all care planning and review.
- To work with the young people, in order for them to be able to identify what is a safe and appropriate relationship, to then be able
- To provide realistic expectations of behaviour and sensitive measures of control.
- Provide a 'homely' living environment for the young people.



3. About Our Home

Facilities and Services

Willow Lodge is located in a village, close to the town of Hinckley. It has good access to the A5, M69 and M6. The home is within easy access of a wide range of facilities, including a Post Office, newsagents and a GP Surgery. All the recreational amenities, shops and attractions of the city of Leicester, Coventry and Hinckley are within easy reach.

Willow Lodge is a large, beautiful, modern detached home, set at the heart of a village. The home offers children and young people the opportunity to play safely without leaving the premises. Willow Lodge also has good access to local walks, parks, leisure clubs, schools and churches.

The home interior has been carefully planned so as to give privacy but also enable young people to experience a safe and homely environment. The décor, furniture and accessories in the home have been chosen to provide a warm and welcoming environment.

Each young person has their own lockable bedroom allowing for both privacy and security. Bedrooms are fully furnished and provide a space to relax and study privately. Young people are encouraged and supported to personalise and maintain their own rooms. For safety reasons staff can gain access to bedrooms and bathrooms if necessary. Where possible they will always seek to request permission from the young person prior to entering.

The property provides the following facilities:

Ground Floor	First Floor	Utilities
Kitchen	4 Bedrooms	Mains gas
Dining area	Bathroom	Mains electricity
Lounge area	Shower	Mains water
Staff office	Toilet	Fire detection system
Toilet	Staff bedroom & ensuite	
Games Room	ensuite	
Utility Room		
Bedroom 1		

Overnight, depending on risk assessments and/or the number of young people resident, either one or two residential staff are on sleep in (waking night) duty. Staff have separate bedrooms and a bathroom provided for their own use. If necessary a waking night would be employed to work every night based on the risk levels of the particular young people accommodated.

4. Supporting Cultural, Linguistic, Religious, Creative and Physical Needs

We consider the cultural, religious and spiritual needs of young people as being central to their identity and welfare and are proactive in supporting them to fulfil them. We support young people to explore their religion and culture and work towards increasing young people's understanding and acceptance of different faiths.

At the time the young person is admitted to Willow Lodge their care team will talk to them and their family, if possible, to identify areas of need in relation to culture, language and religious observance. Where needs are identified they will become an intrinsic part of the young person's Care Plan/Placement Plan and Cultural Plan.

Wherever practicable we would support a young person to attend a service, or receive instruction in the faith to which they belong. We will do our utmost to provide for dietary requirements related to an individual's religion and would encourage dress that reflected their beliefs.

Leicester is a diverse and multi-cultural city and this is reflected in the staff teams that work for United Children's Services. The city contains a multitude of places of worship, restaurants, shops, cinemas, theatres and organisations that cater for people of different faiths and cultures. Hinckley is also nearby and offers many of the amenities of the larger city.

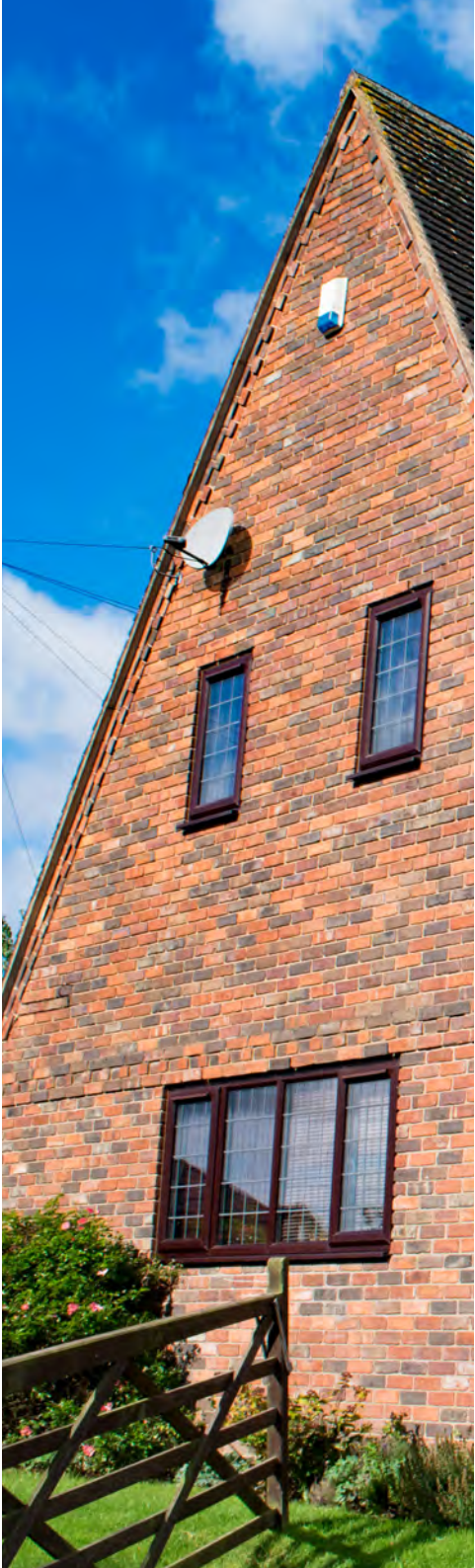
At Willow Lodge we actively encourage young people to experience a variety of activities and pursue different interests. We support them to develop existing and new hobbies. We acknowledge the importance of sport in developing an appropriate level of competition, teamwork, physical and mental health and so actively promote participation in a range of sporting activities. There are a range of leisure and swimming centres in this area and in addition youth football, rugby, netball, hockey and cricket teams. The nearby outdoor pursuits centre can offer qualified instruction in

adventure sports.

We also understand the importance of peer relationships during adolescence and that belonging to groups can help a young person to find their own identity. There are local drama, scouts/guides, music and mechanics/technology clubs within the local area, that we encourage young people to integrate with.

Within the home staff offer a range of structured and non-structured activities such as arts and crafts, computer games consoles and board/card games. The large garden allows for games of football, badminton, basketball and manhunt with all young people and staff encouraged to participate.

We are aware that some activities require qualified instructors or leaders for safety and insurance purposes. Activities involving risk will be carefully checked and a risk assessment will be completed where necessary before they are undertaken. A parent or carer's signed permission will be gained before a young person becomes involved in high risk recreational activities.



5. Education

We place great emphasis on education and on supporting young people to achieve in this vitally important area. The majority of young people coming to Willow Lodge have had a disrupted educational history. This lack of regular schooling is often due to family problems or a number of different placements.

Willow Lodge is equipped to take account of both educational and emotional needs, and as such, has to be both structured and yet offer a large degree of flexibility. The initial process is very much one of creating stability in order that the young people can begin to function in an educational setting.

The home expects all young people, wherever possible, to attend a local school on a full-time basis. We actively encourage and support young people to achieve this. However, if due to negative experiences there is a complete breakdown of trust, and a child or young person is unable to go to school. Willow Lodge will arrange for the provision of education via our registered SEMH School, delivered by qualified teaching staff, so that learning may continue and work towards mainstream school reintegration is maintained.

Where a young person has concerns or worries about schooling we aim to link education with their own gifts, talents and interests so as to provide more context and reduce apprehension.

Staff will help young people get to school, attend after school activities and complete their homework. They will also work with education staff and other professionals in supporting young people meet their identified educational and training needs. This includes working with local authorities, in accordance with the Children (Leaving Care) Act 2000, to prepare those young people who are 16-plus for leaving care.

The home expects all young people, wherever possible, to attend a local school on a full-time basis. We actively encourage and support young people to achieve this. However, where there is not a suitable option to meet the young person's needs the Willow Lodge will arrange for the provision of education via our registered SEMH, Oakwood Community School. Oakwood is a cross phase special school catering for boys and girls aged 8 to 18, who have a statement of special educational needs or an Educational Health Care Plan. All teaching is delivered by qualified staff, so that learning may continue and work towards mainstream school reintegration is maintained.

6. Children's Health

When young people come to live at Willow Lodge we request that they have a medical check-up. Young people are registered with, and encouraged to attend, a local GP and dentist who will deal with both routine and emergency treatments. Each young person will receive a:

- 6-monthly dental check
- Annual eye test
- Annual statutory medical assessment

Consultation with a doctor remains confidential. Where needed the young people are accompanied when paying a visit to the doctor, dentist, or other health care appointment but where it is appropriate, they are supported to make and attend appointments independently.

We actively promote good health care. We will support young people to remain healthy through the provision of information and guidance on health issues, including diet, sexual health, smoking and substance abuse. Smoking is not permitted within Willow Lodge and smoking cessation will be proactively encouraged by staff.

We monitor and record details related to the overall health and wellbeing of each young person and are mindful of the following:

- Health history (past illness, operations, vaccinations, immunisations, allergies, developmental milestones, prescribed medication, current treatments)
- Diet including cooking and menu planning
- Exercise and keeping fit
- Dental care
- Optical care
- Sexual health
- Side effects of any medication

We encourage that, wherever possible, a young person takes as much responsibility as they are able to for managing their own medication and health care. We have a written policy that clearly states our responsibilities and the procedures for dispensing and storing medication. Details can be found in United Children's Services Policies and Procedures Manual.



7. Young People's Therapeutic Care

Complementing our commitment to ensuring the health and safety of young people in our care is our belief in the effectiveness of therapy as part of providing the best overall treatment for each child. In providing therapy we place the child and the adult at the centre of our thinking and equip the therapy team with the ability to offer a safe, quiet and uninterrupted space.

Once Therapy Services receives a referral, usually during the first six weeks of a placement, an allocation meeting will take place. It is at this point that the therapist will be allocated to the child and their key worker. The child's allocated therapist will then contact the young person's school and social worker to discuss ways of working together and to gain a mutual understanding of the child and his/her case. Within this six week 'settling' in period there will be a care team meeting with the allocated therapist to enable the care team to express how the child is settling into the home and to share any concerns.

Therapy Services planned structure aims to provide the most appropriate and beneficial therapeutic care for each individual child and the best support for significant adults who have the child in mind.

Clinical Assessment

The 'settling in period' offers the child a period of clinical assessment of up to six weeks. This will be conducted on an individual basis with the child and most appropriate professional adults i.e. care staff, education and therapist. The Strength and Difficulties Questionnaire (SDQ) will form the basis of this assessment which will then be regularly evaluated and will

support the individual Child's Care Plan. Concurrently we may also request a Clinical Psychological Assessment of the child. This assessment would be provided by an external agency. These two assessments taken together enable the therapist to establish realistic expectations of the child's future progress, but also formulate what frequency and length of intervention would be most appropriate for the child.

The therapist would then offer where appropriate:

- Individual sessions to the child
- Joint key worker(s) and child therapy sessions
- Individual with key worker only sessions (for up to 6 -12 weeks)

Therapy

Current Therapist – Jane Wildbore, Integrative Psychotherapist and Counsellor.

The Therapy Department offer different models of therapy and psychotherapy namely:

- Child and Adolescent Psychoanalytical Psychotherapy
- Art Psychotherapy
- Psychodynamic counselling

To ensure continuity of working together in the child's best interest, the child's therapist takes regular part in care team meetings that works with the case. Twice a month therapists also offer consultations to all homes, attend team meetings and provide advice/consultation to staff meetings, and to individual members of staff. The child's therapist has regular contact with outside agencies i.e. Social Services and schools by providing six monthly review reports and by taking part in review conferences and meetings as and when appropriate.

The Therapy Department recognises the need for children to experience the world around them i.e. for the child to have an opportunity to develop and sustain relationships outside the system, therefore the child needs to have planned and negotiated therapy holidays which are normally negotiated around the festivals and culture of the child. Over the period of the child's holiday, support for adults who work with the child is regularly provided i.e. meetings with key carer/s, care teams and seniors meetings. This planned structure aims to provide the best treatment for each individual child and the best support for significant adults who have the child in mind.

Consultation with Staff

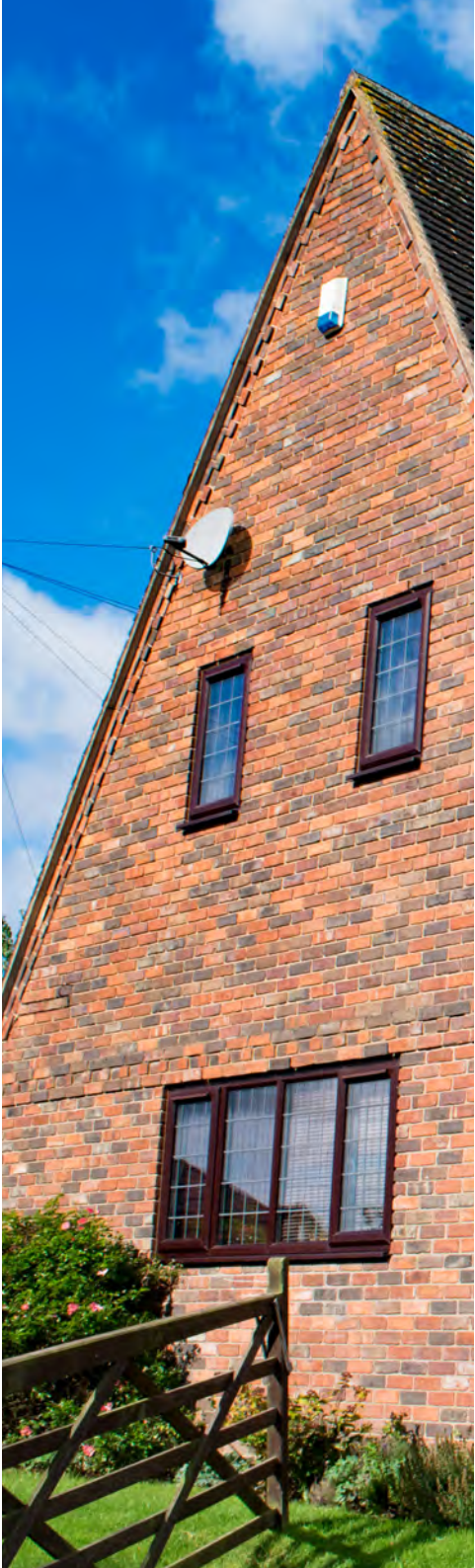
Each home of United Children's Services has an allocated therapist that provides consultation meetings to care staff. The application of the psychotherapist's knowledge and understanding in the residential setting is of considerable value and there are different forms that this can take place:

- Providing individual psychotherapy
- Providing consultation to individual staff
- Providing consultation to staff group

A consultation meeting offers everyone directly caring for young people the opportunity to come together and talk about their experience.

Consultation aims to allow everyone attending a voice. Therapists are not there as experts but rather to help staff team members identify specific difficulties in their day to day work with individual young people or as a group.

This consultation process is ultimately for the benefit of the young people in our care but also offers an opportunity for care staff to consider how their own ways of interacting could impact on their work with the young people and their relationships. Working with young people who have emotional and behavioural difficulties can be very hard and it is important that staff can think together about the impact of the work on them as individuals and as a team.



8. Leadership and Management

Acting Responsible Individual

Beth Morrish
United Children's Services
Head Office
The Old School House
Gainsborough Road
Drinsey Nook
Lincoln LN1 2JJ
Telephone: 01455 271306

Home Manager

Elizabeth Duncanson

Staff information

Willow Lodge places great importance on recruiting and retaining high calibre staff that possess appropriate qualifications and experience. We aim to appoint a staff team of mixed ages, gender and ethnicity, that individually and collectively present as positive role models for the young people in our care. At all times we will have the appropriate number of staff on duty with the necessary experience and ability to meet the needs of the young people

Statement of Purpose

Name	Position	Qualifications
Elizabeth Duncanson	Manager	Elizabeth began working for UCS in January 2018 as deputy manager, having previously worked in an LD home since 2011. Elizabeth has a Level 3 diploma in children and young people and has obtained her level 5 leadership and management. She has also completed DSL training.
Sarah-Louise Foster	Deputy Manager	Sarah joined UCS in Sep 2021 alongside studying counselling. Sarah will be working through her initial training and the induction process and is looking forward to working and progressing in the company.
Karen Marvin	Shift Leader	Karen joined UCS in February 2021. She has previous experience of volunteering with young people aged 5-18 and has also worked in education for the last 13 years. Karen is looking forward to this new challenge.
Gretchen Tribe	Shift Leader	Gretchen began working for UCS in March 2020 she has previous experience of working with young people in a residential setting, she is keen to progress within the company and is currently a shift leader.
Matthew Murrell	Senior RCW	Matt joined UCS in April 2023 having previously taught children and adults martial arts for the last 10 years. Matt was also the activities manager at David Lloyd gym prior to joining UCS gaining his experience working with young people from various backgrounds. He is looking forward to developing his skills with in UCS and keen to progress.
Charnelle Goodwin	Residential Childcare Worker	Charnelle joined UCS in November 2020. Charnelle has previous experience with working with young people in a specialist education setting and has a degree in psychology.
Gary Shadforth	Residential Childcare Worker	Gary joined UCS in March 2023, Gary is a scout leader and has been in this role for the last 30 years. Gary is keen to share his skills and knowledge with the young people at Willow Lodge. Gary will be working through his initial training and induction process and is looking forward to working with in UCS.
Carol Clarke	Residential Childcare Worker	Carol joined UCS in April 2022. She has previous experience working with young people with learning disabilities. In her previous role she worked as a children's and adults care worker in the community.. Carol is looking forward to progressing with in UCS.
Lydia Gilmour	Residential Childcare Worker	Lydia joined UCS in July 2022 after having previous experience working in an early years setting, gaining a level 3 diploma in Early Years Education. Lydia is looking forward to a new challenge and to progress within UCS
Amy Kearsley	Residential Childcare Worker	Amy joined UCS in January 2023 having previously worked in a custodial setting. She will be working through her initial training and induction process and is really looking forward to her new role and progressing within the company.



Staff supervision, training and development

We fully recognize that our staff team forms the essential strength of our service and we are committed to supporting individual growth and development for our employees.

Supervision

The object of supervision is to monitor individual performance against identified standards, support staff in their day-to-day work and develop them in their professional role, by offering advice, guidance and training. Key points of United Children's Services supervision policy are:

- All staff have a supervision contract.
- All staff are regularly supervised by their line manager or a senior member of the staff team. The frequency of supervision is dependent upon an individual's role and level of experience.
- The supervisor keeps a written record of supervision and the supervisee may have a copy.

Regular staff meetings facilitate sharing of information, developing skills and learning retrospectively from issues/incidents. Key issues in the implementation of each Young Person's Care Plan are discussed by the whole staff team at such meetings. Representatives from the education and therapy teams also attend these meetings to facilitate consistency of care in all areas of the young person's development

Training

All of the staff at Willow Lodge complete a comprehensive induction training package and thereafter receive an annual appraisal. Training includes:

Health and Safety/Fire training/Record keeping/Key working/First aid/Safeguarding children and young people/Positive Behaviour support/Radicalisation/Child Development/Cultural Diversity and Equality/Child care legislation/Administration of Medication/Food Hygiene/Bullying, Complaints and Representations/Self Harm/Sexual exploitation/Planning Activities and Risk assessments/Eating disorders/Understanding stress and its responses in troubled children/Appropriate Adult Training/Restorative practise/Drug and alcohol awareness

All staff are enrolled on the level 3 Diploma in Health and Social Care with Children and Young People depending on their position within the company but only after completion of induction training and successfully completing their probation period.

The home also accesses specialist training to ensure that staff are able to meet the needs of young people that may lie outside their normal training and experience. Possible examples may include Child Sexual Exploitation (this is covered in safeguarding training but maybe offered specifically if the need arose), WRAP (Working to Raise Awareness of Prevent – counter terrorism/radicalisation) and additional Drug Awareness training.

9. Admission Criteria

Admission Process

All admissions including same day placements are made via a referral to Head Office. We ask Local Authorities to provide detailed paperwork before we consider each placement. We ask for the following information about each young person:

- Presenting problems and other significant behaviours
- Social work and education reports
- Results of any mental health assessments
- Family Background
- Details of any supervision orders / court orders

An impact risk assessment is carried out as a means of highlighting the risk posed to those young people already in placement, the young person being referred and the community. All young people residing in the home will be consulted prior to any new admission and their views will be valued and listened to. This consultation is recorded.

In the case of same day admissions, young people are given information on arrival, in the form of a Young Person's Guide specific to Willow Lodge.

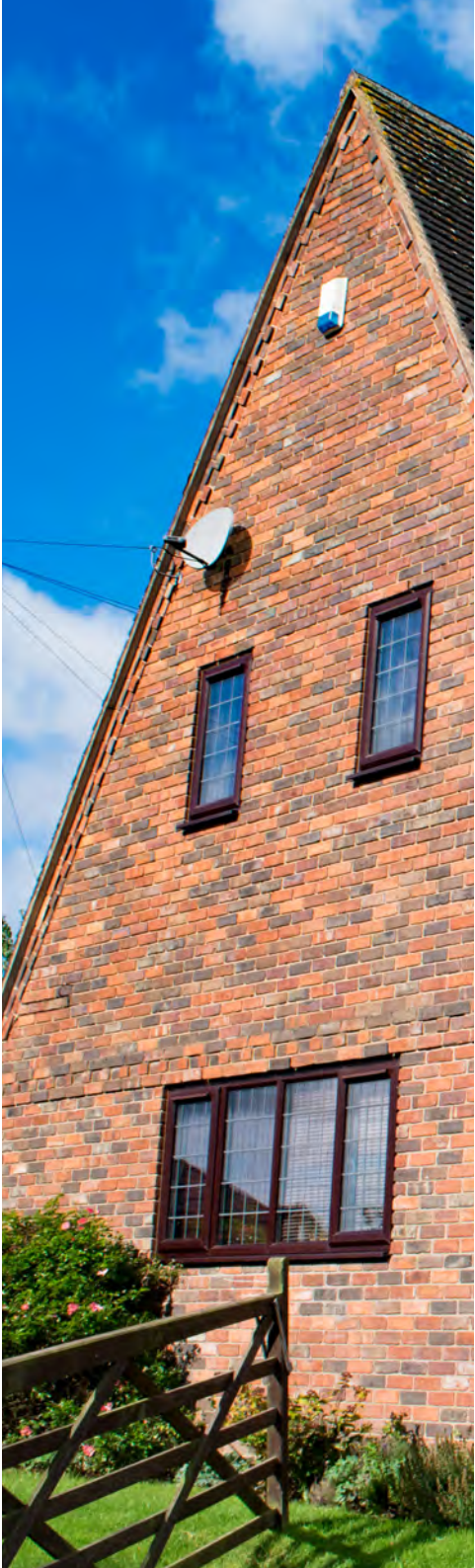
Admission

On the day of admission we require the following paperwork; which must be signed by the placing authority and those with parental responsibility.

- Completed LAC Paperwork with new address
- Authority to accommodate
- Medical Consent
- Full risk assessment

We conduct a recorded admission meeting within the first 72 hours of a placement. At this point we ensure the following paperwork has been completed and signed by all those required to do so. The documents are then kept on file.

- Family Contact Arrangements and Details
- Medical History and Requirements
- Education History IEP/PEP
- Social Worker contact arrangements
- Company plans
- Risk Assessments



Planned Admission

We expect young people wherever possible to be involved in the placement planning process so that they are able to take some ownership for their move to Willow Lodge. Ideally all young people would visit us with the appropriate guardians prior to admission, as a means of integration into the home.

Each Young person will be assigned a Care Team. The role of the team is to liaise with the young person and their family or carers, to gather as much information about the young person as possible and to give information about the service and facilities provided by us.

Arrangements will be made for the young person to visit Willow Lodge, ideally for a few hours - to meet staff and to have a look at the Home. We then organise an overnight stay and work towards agreeing a date of admission. During this process we try and identify a member of staff the young person relates to well and on the day of admission we organise for that staff member to be on duty for the evening the young person arrives and for the following morning when they wake up.

We do not allocate a key worker for at least a few days and not before we have consulted with the young person. All young people, except emergency referrals, will visit before their admission. It is essential that an admission meeting takes place within the first 72 hours of a placement.

Emergency Placements/ Same day Placements

All emergency placements are assessed for any risk posed to those young people already in placement, the young person being referred and the wider community.

Following an emergency placement, a review takes place within 72 hours to consider whether the young person should remain in the home or if it is in their interests, or the best interests of the other young people, for the child to move to a different placement.

Assessment Period

Young people admitted on a same day/emergency basis are placed on a short-term plan initially, to allow for a comprehensive integrated assessment to be completed. This assessment involves Care, Education, Therapy and input from other agencies and professionals involved. The young person's views, wishes and feelings will be recorded along with those of 'significant others'.

The assessment will be used to inform a comprehensive risk assessment and a long-term behaviour management strategy. The assessment will also identify whether it is in the young person's best interest to remain in the home on a long-term placement, or move to another United Children's Services home better able to meet their needs. If it is felt that United Children's Services cannot meet the needs of the young person, the local Authority will be asked to seek a suitable alternative.

10. Contact Arrangements

The staff team at Willow Lodge will support young people to maintain quality contact with family, friends and other people who play a significant role in their lives. Staff will work with local authorities to plan, review and implement appropriate links and this will be documented in an agreed contact plan with the young person's placing authority.

Decisions about contact will feature on the agenda of the care team and in statutory review meetings. Young people will be involved in these decisions and will be able to express their views and wishes. Staff will do all they can to meet requests about contact. They will explain any contact restrictions arising as a result of safeguarding concerns and the necessity to keep a young person safe.

Contact between young people and their families may take various forms. Access to a telephone and writing materials form the normal day-to-day contact. The young people have access to a house telephone to maintain verbal contact with family and friends. Visits by family are set at the level discussed and agreed at statutory review meetings. Special occasions, such as birthdays and Christmas, are celebrated and it is hoped that family members will be able to visit and take part.

Transport is available to take young people to contact that is away from the home. Any contact is supervised at the level agreed in the contact plan with observation reports completed and shared as needed.



11. Complaints Procedure

Young people living at Willow Lodge are made aware of how to make a complaint if they are unhappy with any aspect of living in the home, and what the procedure entails. They are made to feel able to make a complaint and are supported throughout the process. Any complaint is addressed seriously and without delay and the complainant kept informed of progress.

United Children's Services has a comprehensive complaints procedure that is detailed in our policies and procedures manual. The complaints policy is available in the office for, accessible by all staff and can be provided on request. The policy is also published on the company's website. This procedure, which covers all young people (and their families) involved with Willow Lodge may be used to:

- Challenge decisions made at Willow Lodge
- Raise issues about the standards of care
- Ensure action is taken about alleged infringement of rights, abuse or ill treatment (including bullying)
- Secure consideration of the homes policies and practice

We also have a complaints guide for young people, written in accessible language. This is included in our Young Person's Handbook. Key workers make sure that young people fully understand the complaints process.

Young People are also supported in being able to raise complaints through social services, Ofsted and the Children's Rights Director.

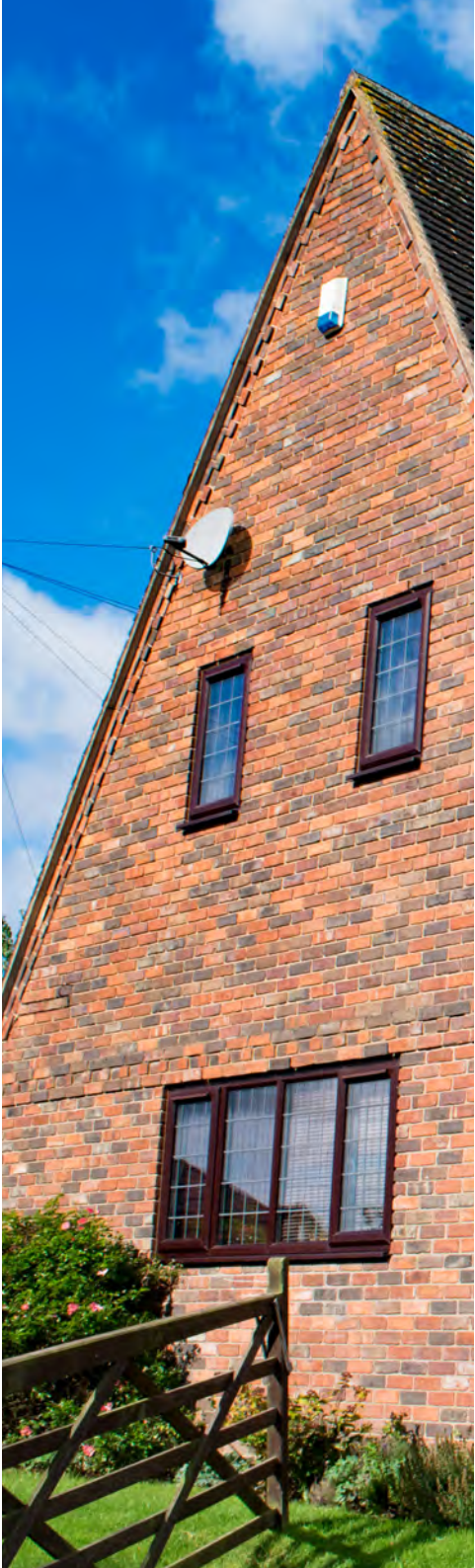
12. Access to Child Protection Policies

At Willow Lodge we are committed to providing a residential environment where young people can live safely, without fear of abuse, intimidation, oppression or threat from anyone. Staff will challenge bullying or any activity intended to hurt, harm or offend another. They will closely supervise young people and act swiftly to safeguard them. The welfare of young people living with us is paramount. All staff are clear about their role in relation to safeguarding and what action they are to take and procedures they are to follow to protect any young person who is at risk.

Safeguarding procedures are detailed in our policy and procedures manual which can be accessed in the homes Office and are available on request to those not employed in the home. The Policies and procedure for safeguarding are also published on the company website.

Willow Lodge is committed to living and working in an environment that encourages positive growth through a respectful approach. Abuse can constitute physical, emotional, sexual and neglect and where there was evidence to suggest that abuse had occurred we would:

- Work within child protection procedures that will inform our actions
- Support the victim of abuse to resolve their experiences
- Support any witnesses of the abuse to increase their understanding of how to prevent abuse in the future
- When appropriate, support the perpetrator of the abuse to understand and change their behaviours



13. Consulting About Quality of Care

We encourage young people to take an active part in making decisions that affect their lives. Consultation with young people is viewed as an essential part of their care and development, and takes numerous forms: Care Team Time, Young People's meetings, involvement in Care Planning and Statutory Reviews, visits to the Home from the advocacy/independent visitor service, Regulation 44 visits and inspections carried out by OFSTED.

Young People's Meetings

These take place on a fortnightly basis and their purpose is to encourage and support young people to speak out and listen. Young people can express their views and be involved in decisions about living at Willow Lodge. They are also encouraged to express their views about the day-to-day running of the Home. They are offered opportunities to make decisions concerning their physical environment, as well as choice of food and leisure activities. Behavioural boundaries are also set through discussion at these meetings. All young people's meetings are attended and supported by staff on duty. The young people will be helped to set the meeting agenda and will be supported to either chair the meeting or take the minutes.

Care Team Meetings

Each Care Team meets every six weeks. Prior to each meeting the young person is informed of the planned meeting, given an agenda for them to complete and invited to attend the meeting. If the young person does not wish to attend the meeting they are encouraged to speak to their key worker and to discuss any issues they wish to be raised on their behalf. All

aspects of the young person's care are discussed during each meeting and minutes are taken. The young person therapist, teacher and Social worker is invited to attend each meeting to ensure that a consistent level of care is provided and all relevant information is shared. The meeting is then discussed with the young person following the meeting, either to confirm their understanding and share their feelings or to provide feedback on the meeting if they did not attend.

Statutory Reviews

Young people are involved in the discussion and formulation of their own care plans and are helped to understand their content and outcomes. Young people are encouraged to attend all Statutory Reviews. Families are consulted and involved in key decisions as appropriate.

OFSTED Inspections

OFSTED inspects Willow Lodge twice each year. The Home is inspected each month by an independent Regulation 44 inspector. The Operations manager also inspects the home on a monthly basis. At every visit young people are given the opportunity to talk privately to the visiting adult.

14. Children's Rights and Anti Discriminatory Practice

We believe that all young people, whatever their background, ethnicity or gender, have the right to be treated fairly, equally and with respect. We encourage all young people to value themselves and others and to respect property.

All young people living at Willow Lodge have the right to live their lives free from abuse, fear and oppression and to experience safety and security. They have the right to be heard and they will be listened to.

At Willow Lodge young people can expect to enter an environment where they can look forward to good and positive experiences that will help repair the damage of the past and lay a foundation for future recovery, change and progression.



15. Protection of Children

First and foremost we have a duty to protect the young people in our care. We are committed to providing a residential environment where young people can live safely, without fear of abuse, intimidation, oppression or threat from anyone. Staff will challenge bullying or any activity intended to hurt, harm or offend another. They will closely supervise young people and act swiftly to safeguard them.

Safeguarding

All staff are clear about their role in relation to safeguarding and what action they are to take and procedures they are to follow to protect any young person who is at risk. Safeguarding procedures are detailed in our policy and procedures which can be accessed in the homes Office and are available on request to those not employed in the home. The Policies and procedure for safeguarding are also published on the company website.

Willow Lodge is committed to living and working in an environment that encourages positive growth through a respectful approach. Abuse can constitute physical, emotional, sexual and neglect and where there was evidence to suggest that abuse had occurred we would:

- Work within child protection procedures that will inform our actions
- Support the victim of abuse to resolve their experiences
- Support any witnesses of the abuse to increase their understanding of how to prevent abuse in the future
- When appropriate, support the perpetrator of the abuse to understand and change their behaviour.

Bullying

We recognise the unhappiness and huge damage that can be caused by any form of bullying behaviour. Bullying will not be tolerated and it is discussed at every young person's meeting. It will always be challenged. Our opposition to bullying is underpinned by a clear company policy that is rigorously enforced.

Surveillance

Willow Lodge does not use CCTV. There are internet and email facilities with the appropriate safeguards in place to protect information sent and received about young people.

Alarms have been fitted to external doors and are turned on at night when staff retire to bed. Trackers are fitted on all company vehicles.

16. Behavioural Support & Management

Our Positive behaviour policy can be accessed in the home and is available on request, this policy is also available on the company's website.

Background

An important aspect of caring for young people is establishing positive relationships and clear professional and personal boundaries, helping to encourage the growth of trust, partnership and a sense of value, for both self and others. Our belief at Willow Lodge is that young people excel when they feel valued, supported, respected, and safe. There is also a clear expectation that people treat each other with respect. This is encouraged through a number of ways including incentives, direct work, young people's meetings and consistent application of behavioural boundaries.

Positive Reinforcement and Sanctions

Being aware of how much positive regard can help to build up a good sense of self and self-esteem, and we endeavour to create a setting that functions positively, making greater use of rewards and positive reinforcements, using sanctions only when absolutely necessary.

While we promote positive behaviours, we realise that young people will make mistakes and should be able to learn from these in order to develop and be ready to be a positive member within society. However, there is a clear expectation that boundaries will be kept and if breached a series of measures are used to maintain them.

All staff undergo positive behaviour support training. Willow Lodge works

on the premise of positive reinforcement, understanding that this will encourage and help each young person to gain a sense of confidence in their aspirations and ideas, it also helps to strengthen their self-belief that they have something positive to offer to the world. Positive feedback is essential for personal growth and particularly in adolescence it is vital to help establish a good sense of identity. Without positive reinforcement we are likely to grow up without a good sense of self/identity. At times it may be felt appropriate to provide constructive feedback to a young person, this is always delivered in a sensitive manner, helping to establish new ways of looking at a situation and broadening our views.



Sanctions or Consequences of Actions

Willow Lodge has a clear policy about how sanctions can be applied. This can broadly be summarized as follows:

Applied Sanctions

- Informal measures as a first option
- Mild/severe verbal reprimand
- Curtailment of leisure activities
- Additional household chores
- The payment of a reasonable sum by way of reparation
- Grounding – provided that it is “in the best interests of the young person who may be at immediate risk”

Prohibited Sanctions

- Any form of corporal punishment
- Deprivation of food or drink
- Any requirement that a child wear distinctive or inappropriate clothing
- Withholding of medication or medical or dental treatment
- Any intimate physical examination
- The intentional deprivation of sleep (but young people should not stay in bed all day)
- Physical restraint (except to prevent harm to self, others)
- Refusal to speak to a child
- Bullying, teasing or humiliation, verbal intimidation or abuse and discriminatory language

This list is not exhaustive

Staff are trained and use Talk down techniques and Conflict Resolution Intervention models within our working practice to manage challenging behaviour.

Restraint

At Willow Lodge our approach to control, restraint and discipline of young people takes account of the following:

General:

- Strength of relationship between adult and young person is key
- Respect for the individual to be maintained at all times
- Opportunities to make amends should always figure strongly ie: care staff to model an understanding and seek solution approach.
- Appropriate language should be used at all times, maintaining a respectful environment. Any comments perceived as derisory by a young person may contribute to an escalation of negative behaviours.

Physical Intervention/Restraint

- Within an environment based upon mutual respect, physical restraint is only used as a last resort; dialogue and diversion are Willow Lodge's primary interventions.
- Physical restraint is only applied if care staff believe the immediate action is necessary to prevent a child from seriously injuring themselves or others or causing serious damage to property.
- All situations involving a restraint will be recorded in detail on an incident report.

Only staff trained in Physical Restraint/Intervention apply these methods within the home.